



ACADEMIC AFFAIRS, RESEARCH
AND STUDENT SUCCESS

Tennessee Public High School Graduate Trends

Board of Trustees — February 27-28, 2025

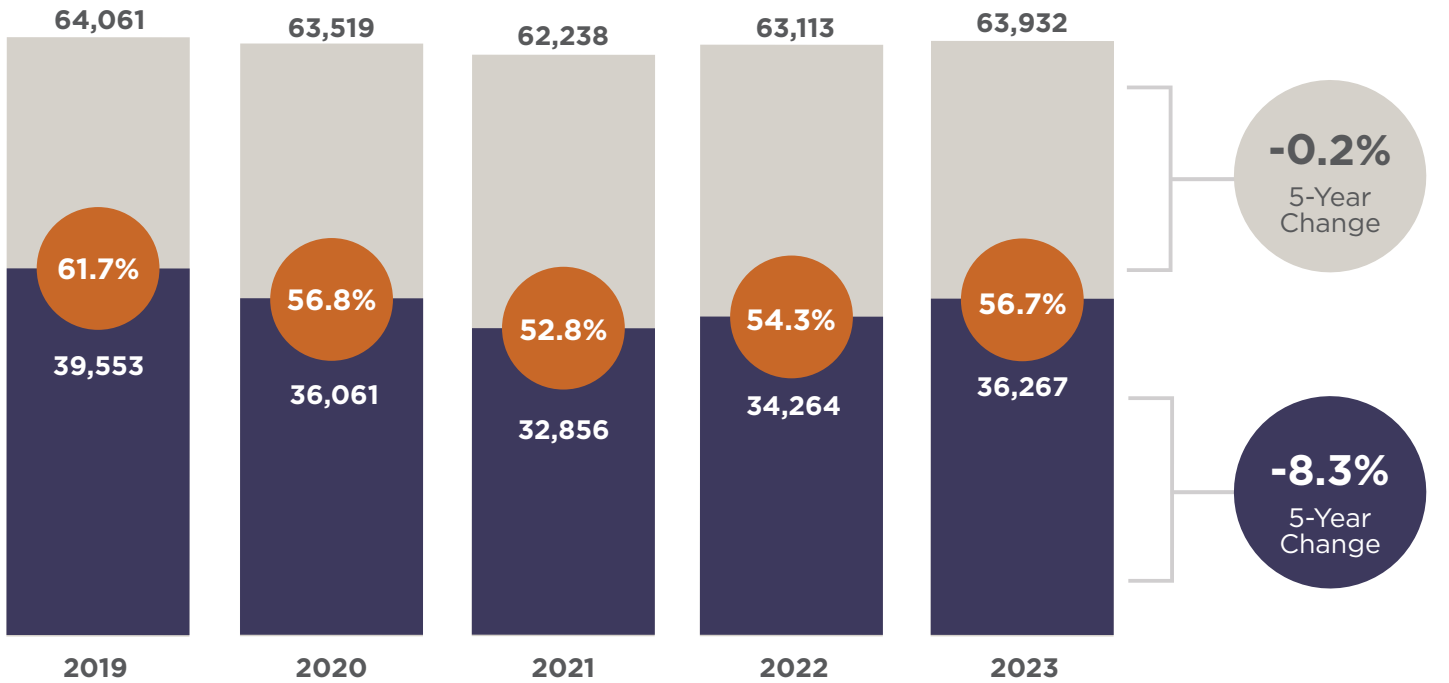


COLLEGE-GOING (CG) HIGH SCHOOL (HS) GRADUATES

2019-2023

All HS Graduates vs. CG Graduates

● # of HS Graduates ● % of CG Graduates ● # of CG Graduates



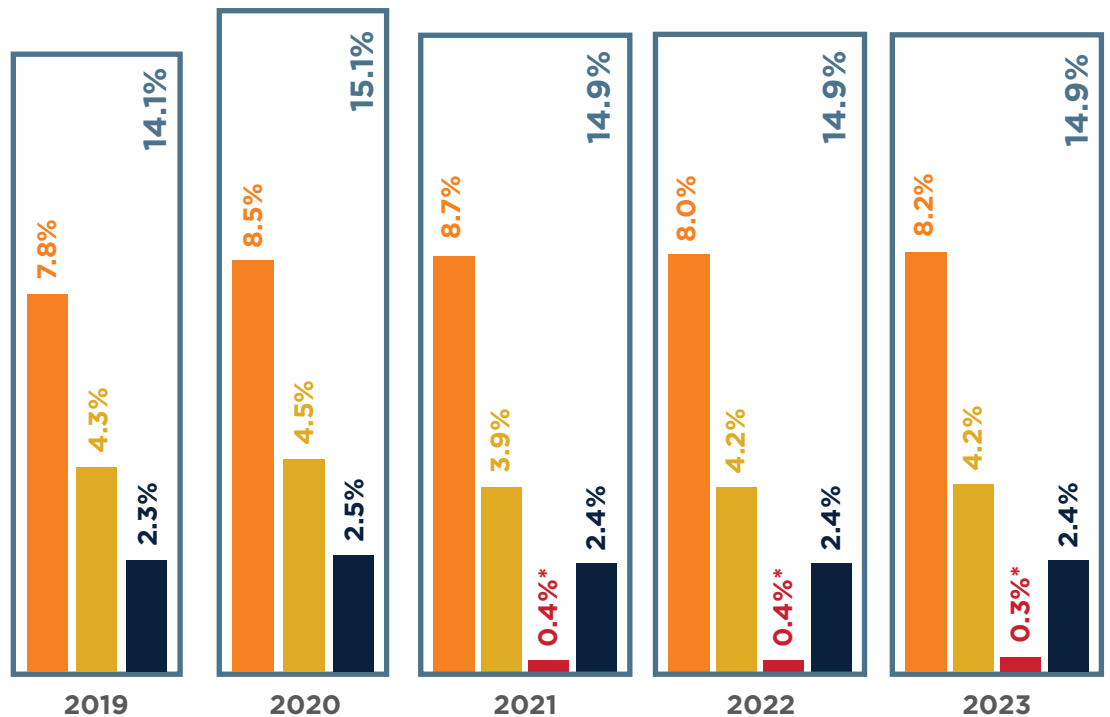
UT Share of CG HS Graduates

● UTK ● UTC ● UTS ● UTM ● UT System



+0.8%
5-Year Change

UT Share of CG HS Graduates

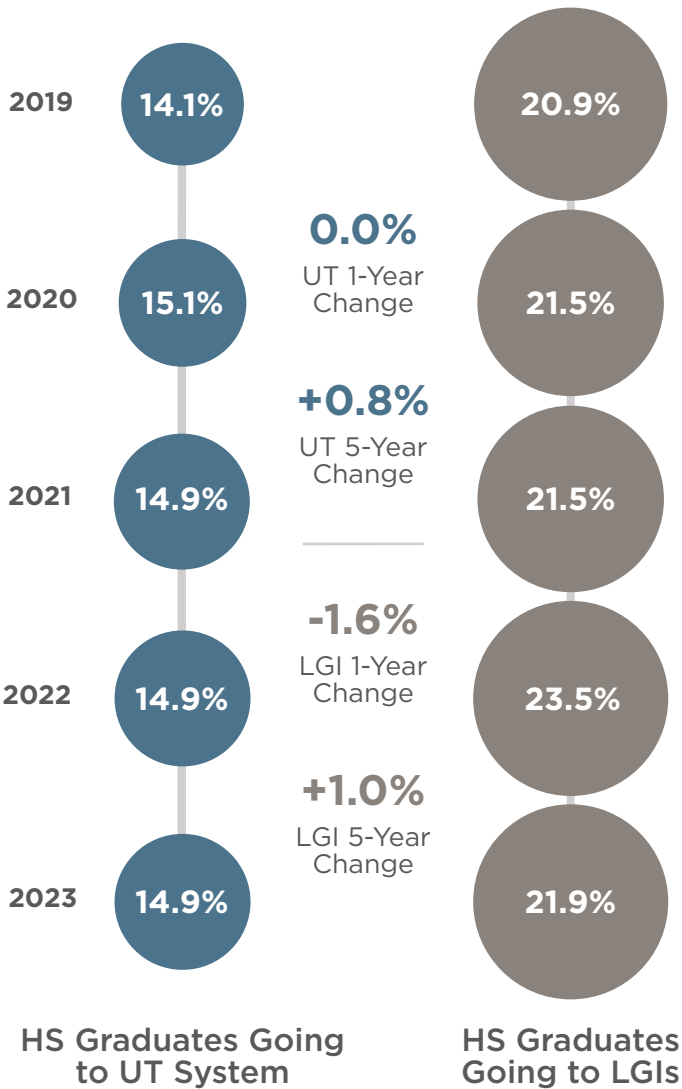


*Martin Methodist College officially joined the UT System as UT Southern in 2021.

Note: UT System percentages do not equal the sum of campus percentages each year because some students are enrolled at multiple UT campuses.

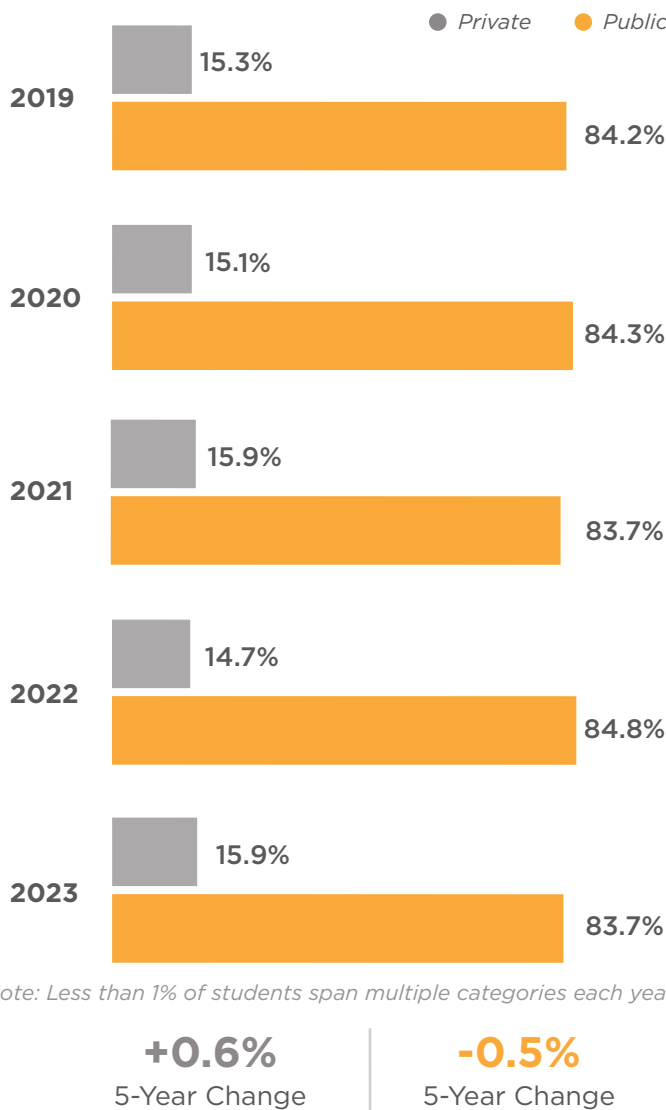
UT VS. LGI SHARE OF CG HS GRADUATES

2019-2023



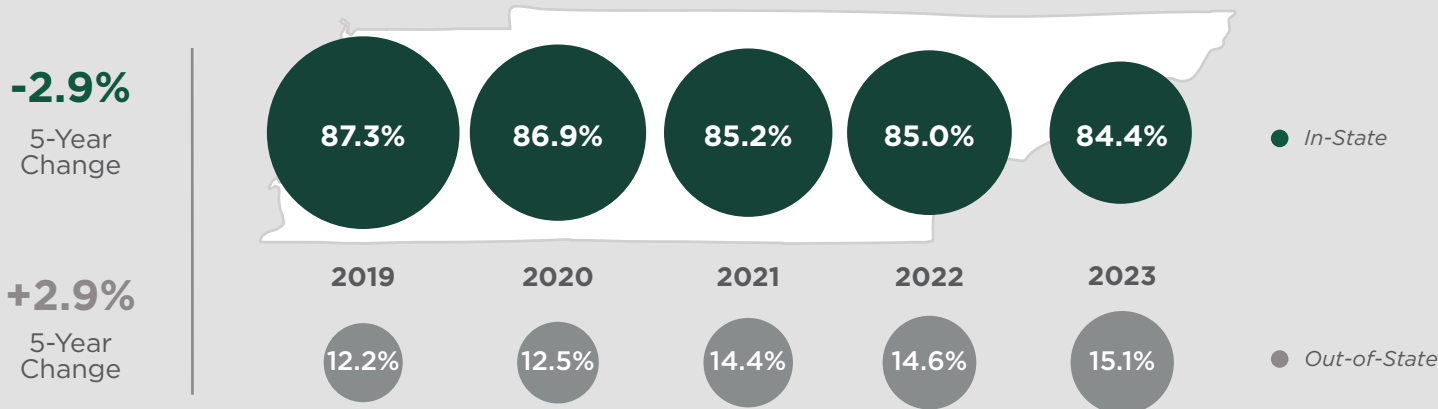
ATTENDING PRIVATE VS. PUBLIC COLLEGES

2019-2023



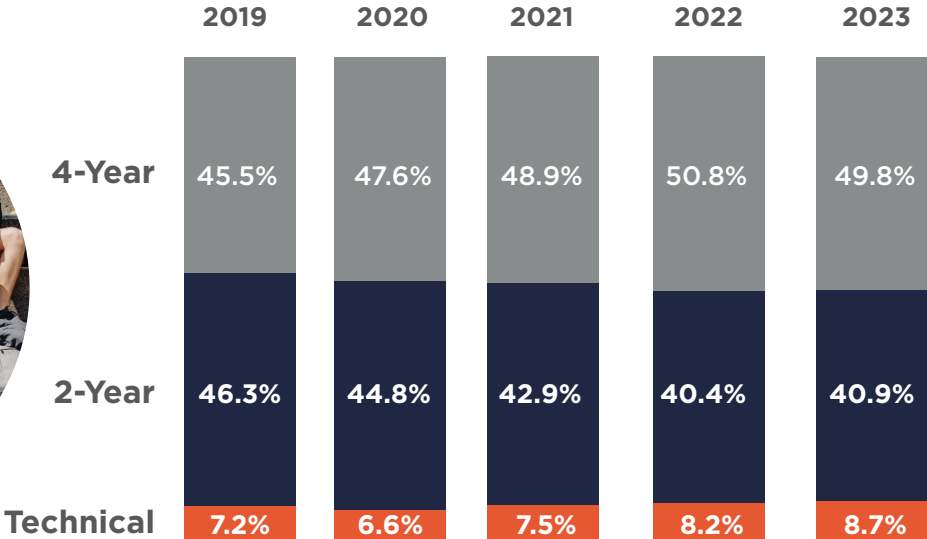
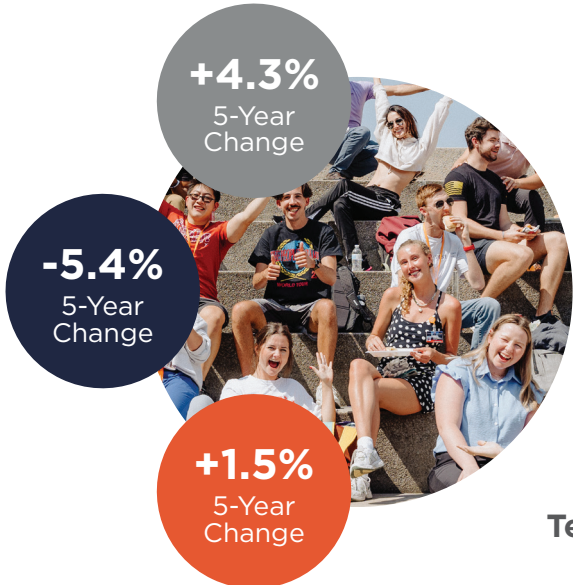
ATTENDING IN-STATE VS. OUT-OF-STATE COLLEGES

2019-2023



SECTOR ATTENDING

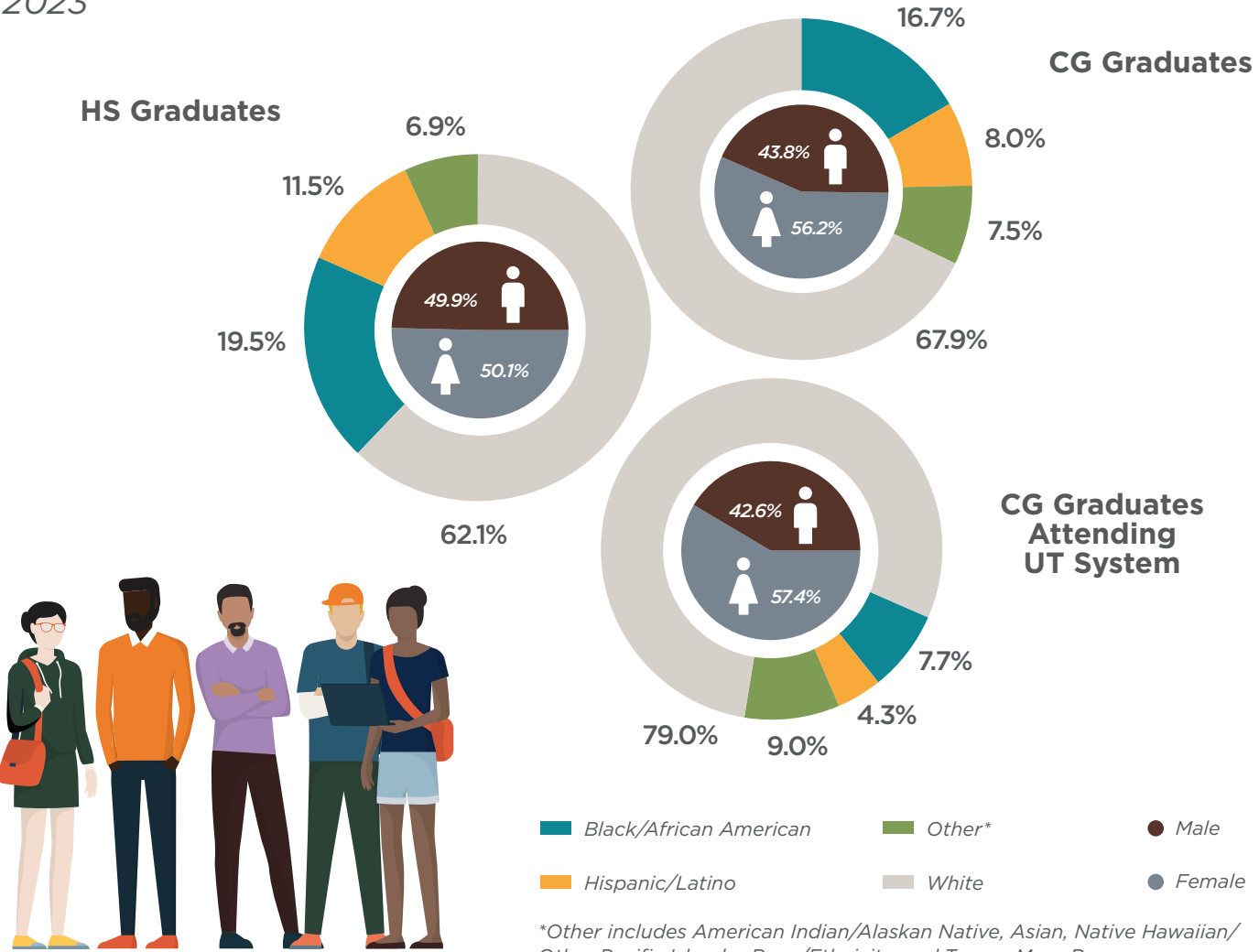
2019-2023



Note: Less than 1% of students span multiple categories each year.

DEMOGRAPHICS

2023





**ACADEMIC AFFAIRS, RESEARCH
AND STUDENT SUCCESS**
Institutional Effectiveness

***ie.tennessee.edu* | 865.974.3843**